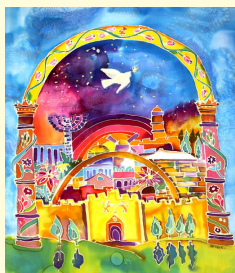


WE HAVE BEEN CREATING  
COMMUNITY JEWISH NEW YEAR CARDS  
FOR OVER 30 YEARS!

## HERE ARE SOME OF OUR MOST POPULAR CARDS

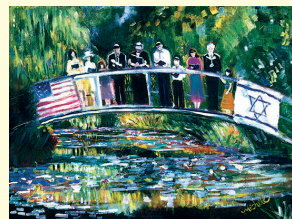
SEE COMPLETE LINE:  
[WWW.ANOTHERCREATION.COM](http://WWW.ANOTHERCREATION.COM)



City of Peace  
© Michele Pulver Feldman



L'chayim  
© Michele Pulver Feldman



Prayer for Hope in Monet's Garden  
© Michele Pulver Feldman



Holiday Kaleidoscope  
© Michele Pulver Feldman



Signs of Peace  
© Michele Pulver Feldman

## FAQS

**Q: If my synagogue joins the program, are there any costs involved to join?**

A: No. This is a NO Risk fund raising program. This means that your synagogue is only obligated to pay for the order that your synagogue places. Payment terms are net 30.

**Q: How is this fund raiser different from others in the past?**

A: Instead of selling cards to individual families, this is just one card. The synagogue gives all the members of the community the opportunity to have their name listed in the card. Most organizations charge \$18.00 - \$36.00 for the listing. Naturally, the higher the price paid for the listing, the more money an organization will make.

**Q: How many names fit on a card?**

A: Using 8 pt type, we can fit about 80 names on a vertical card, and about 90 names on a horizontal. For a small additional fee, we can also add additional names on an insert. Please see enclosed sample card.

**Q: If we have 50 names or less, can we use larger type?**

A: Absolutely!

**Q: What does it mean to Reserve a Card? Are we obligated to pay for that card, if our Fund Raiser isn't successful?**

A: We get very busy in August, so in order to fit your order into our printing schedule, and provide you with fast delivery, we need to know your order is coming. Reserving a card will get you into our system. Once we receive your reservation, we will email you a confirmation, that we are holding that card, in your requested qty for your synagogue. If for some reason, this fund raiser doesn't generate any interest for your synagogue, you can cancel your reservation, **before 8.20.20** (via email) without any obligation.

**Q: Are there any Deadlines?**

A: 1. Yes. All orders **MUST BE IN BY August 20, 2020**; to allow time to proof, print and ship the cards to you, and you will have enough time to mail the cards to members of your community **BEFORE Rosh Hashanah on 9.19.20**

**2. If you RESERVE a card before 6.08.20, you will be entitled to FREE Return address imprint.**

**Q: Can we do this for another holiday?**

A: Absolutely!

More info about our **Trifecta Holiday Program**:

Go to: [www.anothercreation.com](http://www.anothercreation.com)

click on: FAQs about our Community C&P Cards

**email: [hello@anothercreation.com](mailto:hello@anothercreation.com)**



Apples Pom and Shofar  
© Michele Pulver Feldman

Don't miss your  
chance to  
**JOIN THE BEST  
2020/5781  
FUND RAISING  
PROGRAM**

- Affordable
- Connects Community
- NO RISK!

and...

**it is SO EASY!**

SEE INSIDE FOR DETAILS! →

Another Creation by Michele Pulver, LLC

**203-322-4277**

[www.anothercreation.com](http://www.anothercreation.com)

JOIN OUR  
**2020/5781  
COMMUNITY  
JEWISH NEW YEAR  
CARD  
PROGRAM!**

**WHAT IS A COMMUNITY  
JEWISH NEW YEAR CARD?**

It is a simple concept.

It is a Beautiful Jewish New Year Card\* that your synagogue sends to all of the members of your community.

**\*THIS PROGRAM IS AVAILABLE FOR OTHER HOLIDAYS:**

**[www.anothercreation.com](http://www.anothercreation.com)**  
**click on Community Chanukah/Purim**

**HOW DOES IT WORK?**

Your organization invites everyone in your community to make a small donation (we suggest \$18.00 - \$36.00) to be listed on the card. Inside the card is a list of names of those members that made a donation along with a warm and heartfelt greeting of L'SHANA TOVA ~ HAPPY NEW YEAR to the entire congregation!

(SEE ENCLOSED SAMPLE CARD)

**THIS IS A WONDERFUL WAY OF  
EMBRACING & INCLUDING  
ALL MEMBERS OF YOUR  
COMMUNITY!**

CONTINUE READING FOR DETAILS!



**CONNECT YOUR COMMUNITY  
WITH THIS RISK FREE FUND RAISER**

FROM



SEE ENCLOSED CARD SAMPLE

This fund raiser is a proven success because it is **AFFORDABLE!**  
The prices below include cards, set-up, printing and self sealing envelopes.  
All cards are printed (as sampled) in the USA  
on environmentally sound 100lb card stock

**JEWISH NEW YEAR CARDS (ANY QUANTITY)... \$1.40 EACH**  
**ENVELOPE FLAP RETURN ADDRESS...\$50/100 ENVELOPES**

**RESERVE\* YOUR CARD BEFORE 7.20.20  
AND GET FREE RETURN ADDRESS IMPRINT!**

PRICES DO NOT INCLUDE SHIPPING OR MAILING

**\*\*RESERVE CARDS\* ~ NO MONEY OBLIGATION-SIMPLY PUTS YOU IN  
OUR PRINTING SCHEDULE FOR LATE AUGUST 2020  
SEE FAQS ON BACK FOR DETAILS**

**THIS IS AN EASY WAY TO  
INCREASE YOUR  
FUND RAISING PROFITS**

1. Your synagogue decides to participate.
2. You notify your congregants, and charge  
\$36.00 for a listing. 80 people participate.  
\$36 x 80 = \$2880.
3. You need to order 400 cards @\$1.40 = \$560.00
4. Mailing (Regular US mail .55 ea) = \$220.00

JNY Community Card Fund Raising Income....\$2880.00  
Card (+) Mailing... - \$780.00

**FUND RAISING PROFIT! \$2100.00!**

**YES! I WANT TO JOIN!**

**1. GO TO: [WWW.ANOTHERCREATION.COM](http://WWW.ANOTHERCREATION.COM)  
CLICK ON:**

- ✓ **COMMUNITY JNY CARDS**
- ✓ **VIEW (CARD) SELECTIONS**
- ✓ **CLICK TO RESERVE YOUR CARD\***  
**BEFORE AUGUST 20, 2020**

→ **EMAIL US YOUR LIST OF NAMES**  
(TO BE PRINTED ON YOUR CARD)

→ **WE SEND YOU A PROOF, AFTER APPROVAL  
WE SHIP THE CARDS TO YOU**

→ **YOU MAIL THEM TO YOUR CONGREGATION!**  
**IT SO EASY!**

**Questions? 203-322-4277**  
**[www.anothercreation.com](http://www.anothercreation.com)**